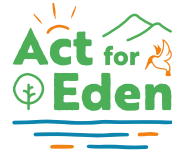
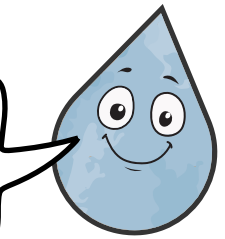


Picture this

Maths puzzles



Can you solve our number puzzles and find out how much water is used for everyday activities in your house? Use the calculations on the left to help you! To get you started, I've given you the answer for the first one - the toothbrush (in litres)!



x 5 =

+ + + + =

x 4 =

+) x 9 =

x 2 =

+ =

x 4 =

x =

x x =

Brushing teeth (with the taps off!) =

Flushing toilet (short flush) =

Flushing toilet (long flush) =

Taking a shorter shower (4 minutes) =

Taking a long shower (10 minutes) =

Dishwasher (Eco setting) =

Leaving a tap running for 1 minute =

Dishwasher (normal setting) =

Washing a car with a bucket of water =

Washing a car with a hose =

